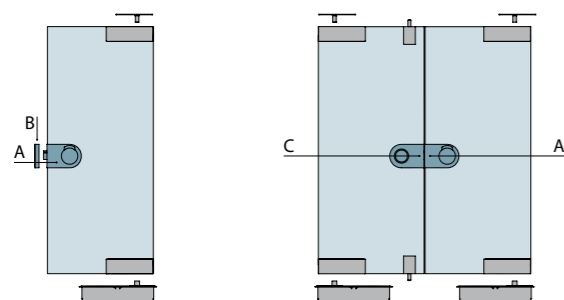
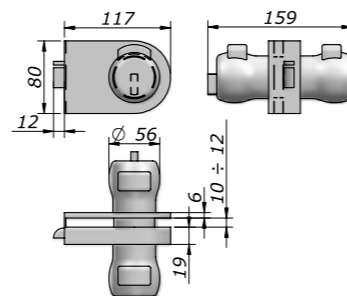
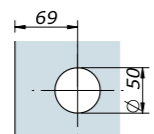


portata / load	spessori / thickness
-	8 - 12



A	B	C	D	E	F	G	H
art. 20/213	art. 313D	art. 21/214	-	-	-	-	-

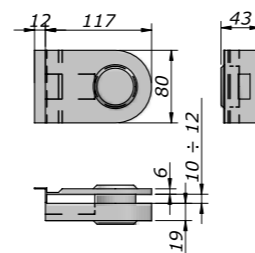
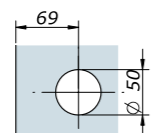
art. 20



Serratura premi apri Meroni
Lock "Premi apri Meroni"

argento/silver	bronzo/bronze	oro/gold	nero/black	verniciato/powder	cromato/chrome	oro luc./bright gold	crom.sat/chro. mat
N-0020-A	-	-	N-0020-N	-	N-0020-C	-	N-0020-I

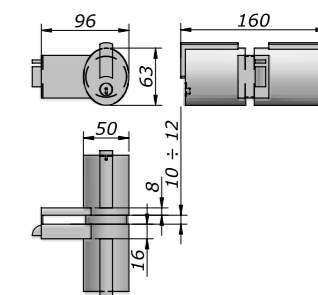
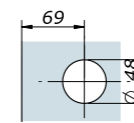
art. 21



Contro per premi apri Art. 20
Catch for Art. 20

argento/silver	bronzo/bronze	oro/gold	nero/black	verniciato/powder	cromato/chrome	oro luc./bright gold	crom.sat/chro. mat
N-0021-A	-	-	N-0021-N	-	N-0021-C	-	N-0021-I

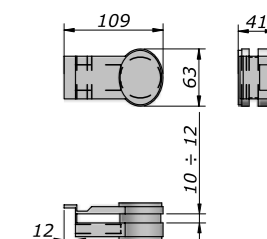
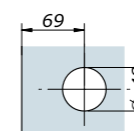
art. 213



Serratura Forma Meroni
Lock Forma Meroni

argento/silver	bronzo/bronze	oro/gold	nero/black	verniciato/powder	cromato/chrome	oro luc./bright gold	crom.sat/chro. mat
N-0213-A	-	-	N-0213-N	-	N-0213-C	-	N-0213-I

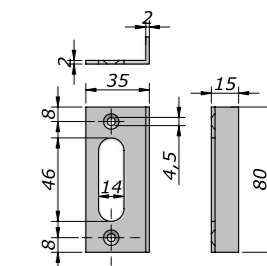
art. 214



Contro per Art. 213
Catch for Art. 213

argento/silver	bronzo/bronze	oro/gold	nero/black	verniciato/powder	cromato/chrome	oro luc./bright gold	crom.sat/chro. mat
N-0214-A	-	-	N-0214-N	-	N-0214-C	-	N-0214-I

art. 313D



Battuta a 90° per Art. 20 e Art. 213
90° Lock stop for Art. 20 and Art. 213

argento/silver	bronzo/bronze	oro/gold	nero/black	verniciato/powder	cromato/chrome	oro luc./bright gold	crom.sat/chro. mat
N-313D-A	-	-	N-313D-N	-	N-313D-C	-	N-313D-I